

FUEL STATION CLEANING



4 Dispenser Screens
Use: 360 Clean® Glass Cleaner
As needed

3 Hoses
Use: OTIS Wipes
As needed

1 Oil/Hydrocarbon Stains
Use: EXIMO® 1x per week
Wet or dry application

3 Dispenser Valance
Use: OTIS Wipes
As needed

3 Nozzles & Cradles
Use: OTIS Wipes or OTIS Concentrate
Gas: 3x per week
Diesel: Treat areas daily

3 Dispenser Skirts
Use: 360 Multi-Surface
To polish and protect, use PROTERO

1 Dispenser Island Stains
Use: EXIMO 2x per week
Pre-treat with OTIS for heavy stains.
(Broom application recommended)

4 Gum Spots
Use: RADO™ & RADO Gum Scraper
As needed

2 Squeegee Buckets
Use: ORUS®
(For freeze control use FRIGO)

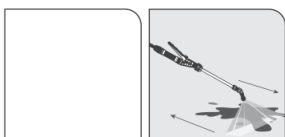
3 Garbage Cans
Use: OTIS Wipes
To polish and protect, use PROTERO

3 Garbage Stains
Use: OTIS Concentrate
Spray on, then scrub with stiff deck brush and rinse.

EXIMO® CONCRETE CLEANER #XMO36



To remove hydrocarbon-based stains such as oil, gas, diesel and more from concrete.



Units used per year: 2.5 to 4

DRY APPLICATION: Using provided scoop, apply EXIMO directly to oil stains. 2. Sweep forward and backwards across the oil until EXIMO is fully dispersed. **WET APPLICATION:** Mix EXIMO and water (add water first) in the sprayer tank. 2. Use pump handle to pressurize the sprayer tank. 3. holding sprayer wand 12" from ground, spray EXIMO directly on stain in smooth, even strips.

* **DRY:** Apply to oil stains weekly. 1/4 cup of EXIMO will cover approx. 55 sq. ft.
* **WET:** Apply to oil stains weekly. Mix 1 cup of EXIMO per gallon of water.

36" APPLICATOR BROOM HEAD ▶ ITEM #XMOAB
HEAVY DUTY N2-GALLON SPRAYER ▶ ITEM #HDSR2
60" EXPANDABLE BROOM HANDLE ▶ ITEM #XMOEH

ORUS® SQUEEGEE BUCKET SOLUTION #ORSU



Low foaming surfactants to remove dirt, grime, salts and other damaging contaminants from glass.



Units used per year: 2.5 to 3

MIX: Add one (1) scoop of ORUS to a clean container/bucket. 2. Fill container with up to 2.5 gallons of water and mix till solution is completely dissolved. 3. Empty ORUS solution into squeegee bucket. 4. Clean squeegee buckets daily.

Note: streaks on glass indicate too much dirt and grime in your squeegee bucket. Mix new solution for a clean finish.

TIP: ORUS® reduces odor in squeegee bucket water. Squeegee bucket "swamp odor" is caused by growth of bacteria, algae and other living organisms. ORUS contains active ingredients that combat this growth, maintaining an odor-free solution.



FRIGO® WINTER ADDITIVE #FGO



Extends the effective temperature range for cleaning below freezing conditions down to -40°.

Lowest Temp (°F)	Total Pumps Needed		
	1 Gallon	2 Gallon	3 Gallon
32° to 27°	1	2	3
26° to 20°	2	4	6
19° to 11°	3	6	9
10° to 1°	4	8	12

Units used per year as needed.

PREPARATION: Determine the lowest expected nighttime temperature (°F). From chart above, determine number of FRIGO pumps per gallon needed for expected low temperature.

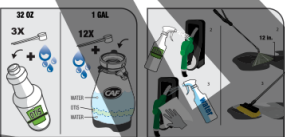
MIX: 1. Add 1/2 gallon of water and ORUS® or ORUS Tabs® to an empty bucket. 2. Using FRIGO Pump, add FRIGO Winter Additive as recommended by the chart for final mixed solution. 3. Add remaining water to fill bucket to the pre-determined gallon(s) mark.

FRIGO PUMP APPLICATOR KIT ▶ ITEM #FGOP8

OTIS MULTI-SURFACE CLEANER #OTS2



Powerful multi-surface cleaner that is an easy to use "hands free" solution for removing oil, grease and grime.



Units used per year: 2 to 3

APPLICATION: Add a small amount of water. Using the chart below measure out the number of scoops needed for your cleaning task. Then fill with water to complete. 2. Apply OTIS to soak dirt and grime. Spray with "jet stream" setting to suspend dirt and allow to drain off. For ground stains, spray OTIS to saturate stain. 3. Rinse with water and/or wipe dry. For stains on the ground, scrub back and forth and rinse to clean ground surface area and/or dry with absorbent pads.

	32 OZ	1 GAL
LIGHT DUTY	1	4
HEAVY DUTY	3	12*

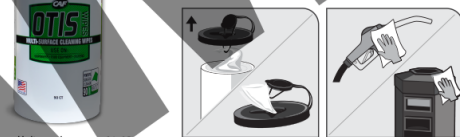
*12 scoops = 1/4 cup

OTIS LABELED 32 OZ SPRAY BOTTLE ▶ ITEM #OTS2SPR
32 OZ WATER SPRAY BOTTLE ▶ ITEM #SPR

OTIS MULTI-SURFACE CLEANING WIPES #OTSW



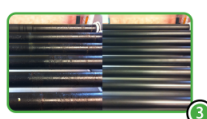
Makes heavy duty cleaning easy. Wipes are fully saturated with powerful surfactants that lift away grease, oils, and heavy grime.



Units used per year: 6 to 12

WIPES APPLICATION: 1. Open lid and loop wipe through, pulling through cap and reattach lid. 2. Clean surface with OTIS Wipes. For detailed cleaning, squeeze excess solution from wipe.

OTIS NSF Certified: We comply with strict standards to maintain our products like OTIS Concentrate, OTIS Tabs and OTIS Wipes meet or exceed food safety requirements. OTIS can be used on food surface areas to remove grease, oils and other contaminants on food preparation areas.



PROTERO® GRAFFITI REMOVER #PRO



PROTERO polishes and restores the sheen of your metal surfaces without using abrasives, acids, or excessive scrubbing.



Units used per year: 2 to 4

PREP: Be sure to have latex gloves, hand towels and safety vest when polishing areas around the fueling dispensers. **To Polish:** 1. Apply ready to use spray directly to dry metal surface or cleaning towel. 2. Wipe surface to polish and shine. 3. Repeat as necessary.

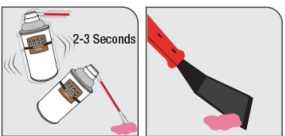
Note: Do not spray polish on glass as it will leave streaking on surface.

UV Protection: PROTERO Provides long-lasting protection and protects against UV rays from the sun.



RADO® GUM REMOVER #RADP

RADO instantly freezes chewing gum for easy removal in all conditions. Simply spray, freeze, and scrape away gum.



2-3 Seconds

Units used per year: As needed

APPLICATION: 1. SHAKE WELL BEFORE USING. Insert straw and follow safety precautions on container. 2. Press lightly to spray gum at close distance for 2-5 seconds. Frost will appear. 3. Immediately chip or scrape off brittle gum with RADO gum scraper.

Note: You may require additional spraying for tougher gum removal.



RADO GUM SCRAPER ▶ ITEM #RADGS

VIVX® GRAFFITI REMOVER #VVX

Powerful graffiti and adhesive remover specifically designed to safely be use on equipment or even plastic.



Units used per year: 2.5 to 4

PREP: Make sure to have gloves, goggles, scrubber and cloth towels prior to use. Access to a water hose is a plus. **TO CLEAN:** 1. Shake VIVX® canister prior to spraying surface. 2. Spray surface from a distance of at least 8 inches and let product soak in for 5 seconds before cleaning. 3. Begin rubbing off the graffiti:

- For smooth surfaces please use only a cloth, hand towel.
- For rough surfaces remove with nylon scrub brush and immediate rinse with water after each application.
- Repeat steps 3-4 as necessary.

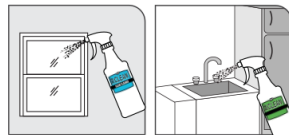
MAGIC PAD HEAVY DUTY ERASER ▶ ITEM #CMP

360 CLEAN® GLASS CLEANER KIT #GCCSK

360 CLEAN® MULTI-SURFACE CLEANER #MSC



360 Glass and Multi-Surface cleaners are designed for heavy duty cleaning without toxic chemicals or ammonia.



Units used per year: 2 to 4

360 GLASS CLEANER: **TO MIX:** 1. Add 1 pump of concentrate solution to clean 32 OZ container. 2. Fill 32 OZ container with water. **TO CLEAN:** 1. Spray surface with a light mist. 2. Wipe dry with a clean cloth or towel

360 MULTI-SURFACE CLEANER: **TO MIX:** 1. Add desired amount of concentrate solution to clean container. 2. Fill container with water. **TO CLEAN:** 1. Spray surface with a light mist. 2. Rinse or wipe away. For food surfaces, rinse with water. Dry with a towel for best results

360 CLEAN® GLASS CLEANER SPRAYER ▶ ITEM #GCC/GCCSPR

360 CLEAN® GLASS CLEANER SPRAYER ▶ ITEM #MSC/MMSCP